

## Fixed Container Fittings

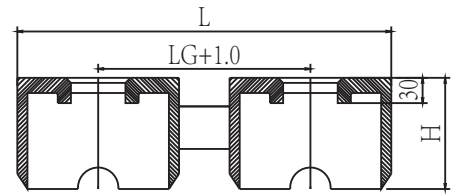
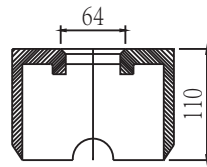
Single Raised Deck Socket

Weight:5.9 Kg

Breaking Load:500KN

Material:Shipbuilding And Forged Steel

Finish:Primer Paint



DF-7

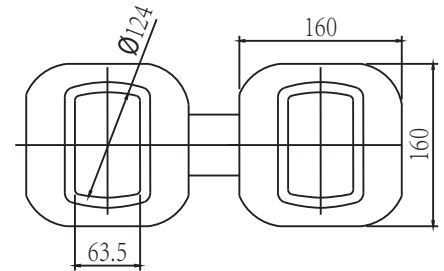
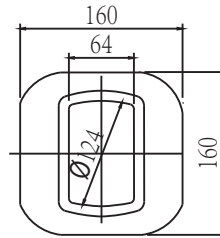
Single Raised Deck Socket

Weight:5.2 Kg

Breaking Load:500KN

Material:Shipbuilding And Forged Steel

Finish:Primer Paint



DF-8

Double Transversal Raised Deck Socket

Weight:DF-9(10)Cc=203mm•11.8Kg

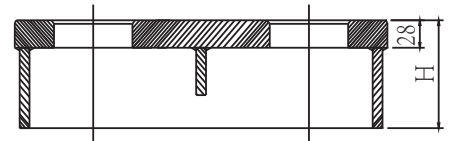
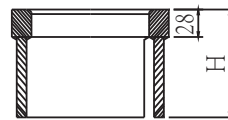
DF-9(20)Cc=216mm•12.2Kg

DF-9(20)Cc=258mm•12.9Kg

Breaking Load:500KN

Material:Shipbuilding And Forged Steel

Finish:Primer Paint



DF-9

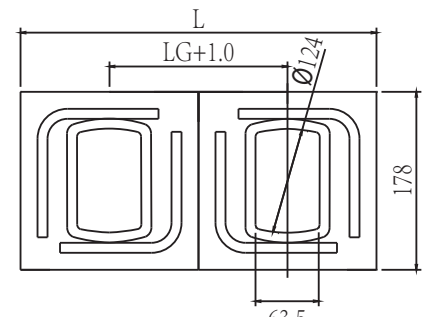
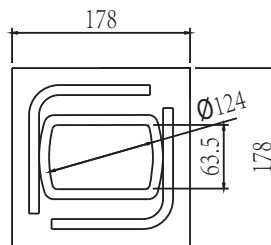
Double Longitudinal Raised Deck Socket

Weight:12.8 Kg

Breaking Load:500KN

Material:Shipbuilding And Forged Steel

Finish:Primer Paint



DF-10