

Fixed Container Fittings

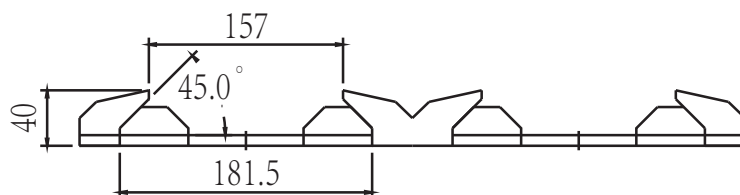
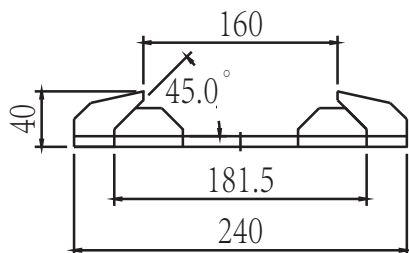
Single Dovetail Deck Socket

Weight:3.9 Kg

Breaking Load:500KN/420KN

Material:Cast Steel

Finish:Primer Painted



DS-1

Double Transversal Dovetail Deck Socket 45° (55°)

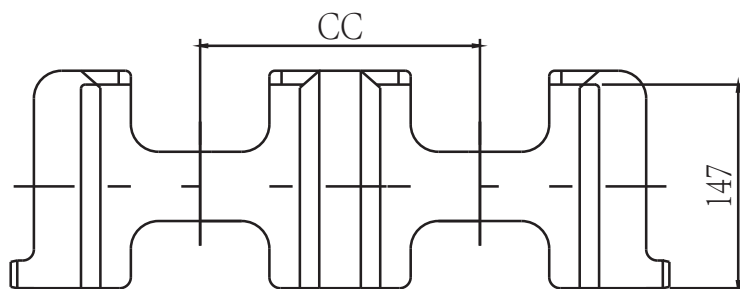
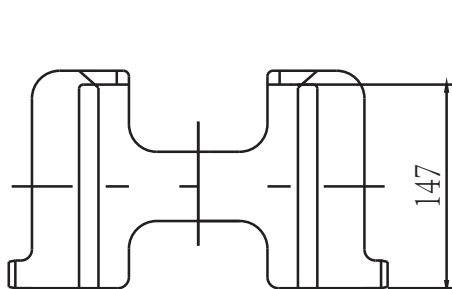
Weight:DS-2(10)Cc=203mm•7.5Kg

DS-2(20)Cc=258mm•7.8Kg

Breaking Load:500KN/420KN

Material:Cast Steel

Finish:Primer Painted



DS-2