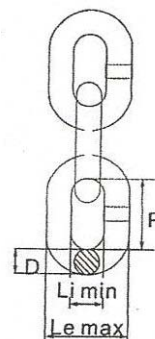
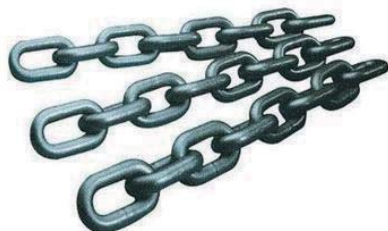
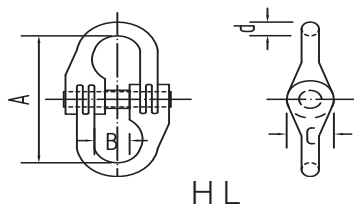


Lifting chains



Dia	Inside length	Inside Width	Outside Width	Weigh	WLL	MPF	BF	1 MIN
mm	P mm	Li min mm	Le max mm	kg/m	kg	kn	kn	mm
6	18	7.8	22.2	0.8	1120	28.3	45.2	4.8
7	21	9.1	25.9	1.1	1500	38.5	61.6	5.6
8	24	13.4	29.6	1.4	2000	50.3	80.4	6.4
10	30	13	37	2.2	3150	78.5	126	8
13	39	15.9	48	3.8	5800	133	212	10
16	48	20.8	59.2	5.7	8000	201	322	13
18	54	23.4	66.6	7.3	10000	254	407	14
20	60	26	74	9	12500	314	503	16
22	66	28.6	81.4	10.9	16000	380	608	18
26	78	33.8	86.2	15.2	21200	531	849	21
32	96	41.6	118	23	31500	804	1290	26

Hammer Locks



SWL	d	A	B	C	Chain Diameter
Ton	mm	mm	mm	mm	mm
1	8	54	19	13	8-10
2	10	66	22	19	10-12
3	12	82	27	23	12-14
4	16	100	33	27	15-18
5	24	142	50	42	22-26
6	32	178	56	48	28-32
7	36	200	64	54	30-42

Specification

- Weight :See Table
- Material :Alloy Steel
- Safety Factor:M.B.L equals 4 × S.W.L
- Finish :Polishing,blackening,plasticization,galvanized&painted