

Fixed Container Fittings

Standard Intermediate Twistlock

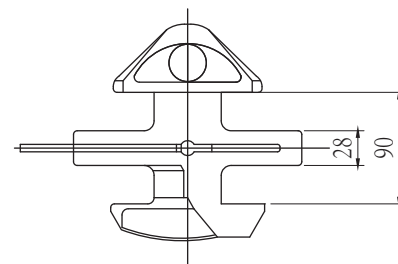
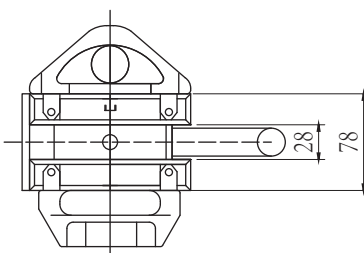
Weight:5.9Kg

Breaking Load:500KN

Material:Cone:Forged Steel

Body:Casted Steel

Finish:Hot Dip Galvanized



TL-A

Fixed Base Twistlocks

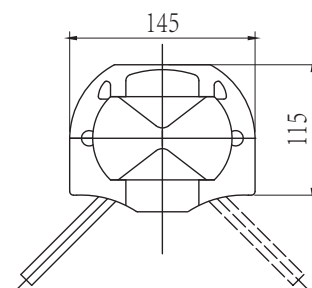
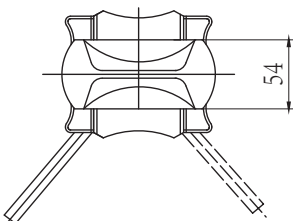
Weight:6.1Kg

Breaking Load:500KN

Material:Cone:Forged Steel

Body:Casted Steel

Finish:Hot Dip Galvanized



TL-B

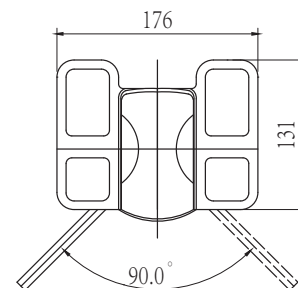
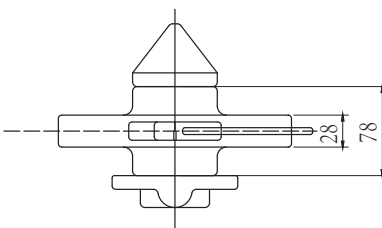
Big Surface Twistlock

Weight:6.8Kg

Breaking Load:500KN

Material:Cone:Forged Steel

Body:Casted Steel



TL-C